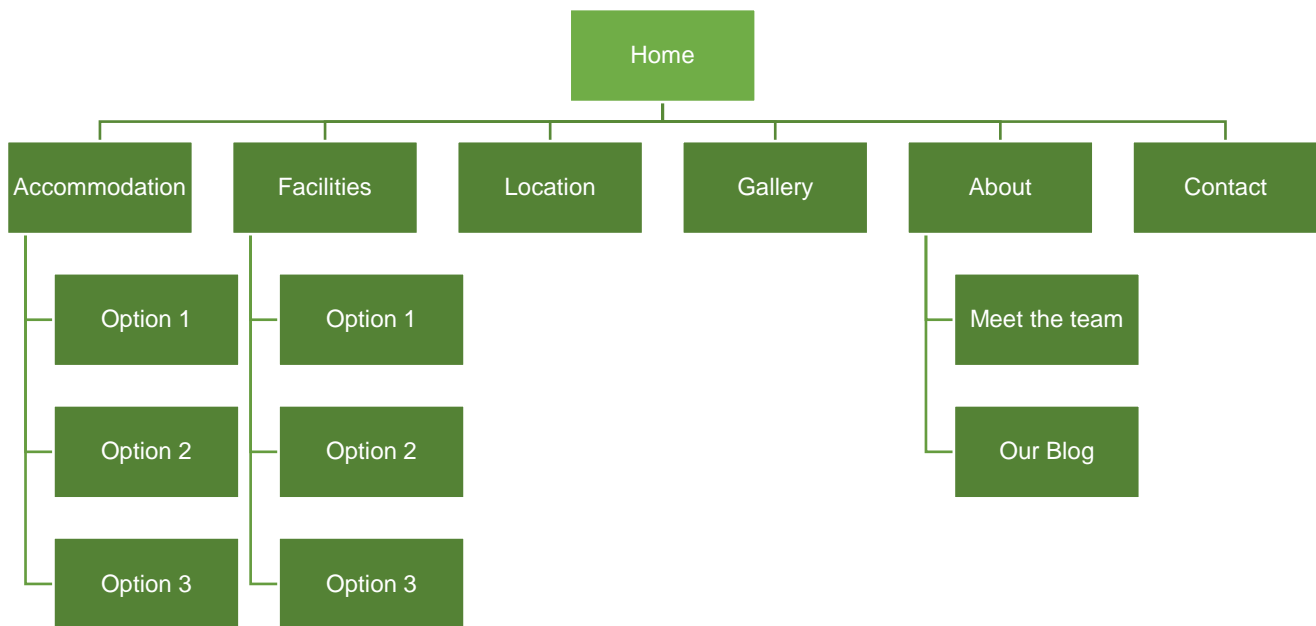


# NETZONE CORE FEATURES

## NAVIGATION MENU & SITE MAP

- Your navigation menu sits in the header section of all pages of your website and consists of links to all the main landing page sections within the site
- The number of links you can have in the navigation menu is limited to 7 (including your home page) to fit within the template's design
- Your site map is the complete page structure of your website and can have an unlimited number of pages and sub-pages
- Here is an example site map showing the 7 main navigation links and sub-pages for an accommodation website



Note: Activity or Tour operators would have a main navigation link titled “Activities”

## GENERAL CONTENT PAGES

- This is the main module you will use to edit the content on each page of your website. It allows you to create blocks of content in rows and columns that display responsively on any device from mobile phone up to large desktop computer

You can have as many content pages as you like



## FILE MANAGER

- Using the file manager, you can upload any kind of document including photos (JPG), word documents, PDF files, etc. This allows you to then create links on your website to these document

## BOOK NOW BUTTON

- Whether you're using ResBook or any other booking engine, your template website will have a main booking call-to-action on every page of your site.

This button will site in the header section of your website to the right of your main navigation menu.

- If you're using ResBook, this button will take the visitor to your booking page that shows your ResBook guest calendar

## CALENDAR BOOKING WIDGET

- If you're using ResBook as your booking engine, this calendar widget will sit on each page of your website located at the bottom section of the hero slideshow
- This widget allows website visitors to select an arrival date and then check your availability around that date by displaying the ResBook guest calendar on your booking page

## SOCIAL MEDIA ICONS

- Using the CMS, you can add links to the follow social media platforms that you may be using. Once the links are added, icons will automatically be displayed in the footer section of your website



## GOOGLE MAP INTEGRATION

- Your location page will include a large Google Map showing where you're located by using a map pin marker

This marker position is easily added using the website's CMS



## SLIDESHOWS & PHOTO GALLERIES

- On all pages of your website you can have a series of slideshows in the hero section at the top of each page.

These slideshows sit just below your header section and can contain any number of your best hero photos as you wish. We do however, recommend no more than 3 or 4.

The photos in the slideshow will automatically revolve. Each image in the slideshow can have its own unique caption.

- Photo galleries can be created with any number of photos and these galleries are where we recommend adding as many photos as you can.

A single photo gallery can be attached to a page which then sits just below the content region and shows a limited set of 5 small thumbnail images which the website visitor can click to the entire gallery full-screen

- A single, dedicated photo gallery page will contain thumbnails of all photos you've added to all your photo galleries and the website visitor can filter this list by selecting a particular gallery to view



Note: Photo galleries cannot contain video but using the General Content Pages editor, you can embed video into any page



## ACCOMMODATION MODULE

- This module allows you to easily setup your accommodation options for automatic inclusion on your main accommodation landing page as well as creating individual pages for each option without the complexity of formatting each page.
- You'll be able to add the following key items and your website will then format the content based on your chosen template design.
  1. Accommodation option name
  2. Short description
  3. Long description
  4. Hero photo
  5. Slideshow
  6. Photo Gallery
  7. From rate
  8. Total number of guests
  9. Number of beds
  10. Size of the accommodation in square metres or feet

## TOUR MODULE

- This module allows you to easily setup your tour options on your tours landing page as well as creating individual pages for each option without the complexity of formatting each page.
- You'll be able to add the following key items and your website will then format the content based on your chosen template design.
  1. Tour option name
  2. Short description
  3. Long description
  4. Hero photo
  5. Slideshow
  6. Photo Gallery
  7. From rate
  8. Inclusions

## CONTACT ENQUIRY FORM

- An enquiry form will sit on your contact page and visitors can send you messages by completing the following items on the form
  1. Their name
  2. Their email address
  3. Their message to you
- All enquiries sent through the enquiry form are emailed to you and saved in the CMS in case you ever need to go back and find any old enquiries



## IMAGE (QUICK) LINKS

- Image Links allow you to add nicely formatted image links that are based on your template design to other pages on your website.

It means that you can simply select the pages to link to and the template does the rest by adding the photos and descriptions you've added for each page

## FOOTER LINKS

- When creating your website's site map, you can specify which pages you want to have links for in the footer section of your website. These are usually links to pages that are secondary in importance for main navigation, such as Terms & Conditions or your Privacy Policy



### **3 PARTNER LOGOS**

- This feature of the CMS allows you to add up to three selected logos, each with a website address, that will then appear in the footer section of your website

### **TESTIMONIAL MODULE**

- This module allows you to add as many customer reviews as you wish. A randomly selected review is then displayed in the footer and visitors to your site can view the full list on a dedicated reviews page
- These reviews are manually entered and not part of TripAdvisor. You can however, add your TA badge code into the CMS and this will be displayed with your list of reviews on the reviews page

### **REDIRECTS MODULE**

- This module allows you to easily migrate from an older website to your new website without losing any search engine rankings you may already have by adding redirects from old website pages to their equivalent page on your new site

### **SITEMAP GENERATOR**

- This feature of the CMS allows you to manually create a search engine sitemap file that can be submitted to Google Search Console

### **COPYRIGHT NOTICE**

- The website will automatically insert a copyright notice into the footer of your website using your business name

### **RESPONSIVENESS: MOBILE AND DESKTOP**

- The website will automatically resize depending on the screen size of the device it is viewed on. On mobile devices and tablets, the layout of the website will be rendered differently from a desktop view, to ensure all content is easy to navigate and view.



## NETZONE ADDITIONAL MODULES POA

### **BLOG MODULE**

- Adding this module and actively creating posts is good for search engine optimisation
- Create a dedicated blog section on your website listing posts by category, with each post having its own content page

### **MAILCHIMP NEWSLETTER**

- This add-on allows you to include your MailChimp details into the CMS which then automatically adds a newsletter sign-up form into the footer section of your website to collect new subscribers

### **MAILCHIMP BEAMER**

- This is a unique feature of our CMS that allows you to create MailChimp newsletters within your CMS from the content you've already published on your website
- Send your CMS created newsletter directly to MailChimp who then take care of sending it out to your subscribers

### **COMPENDIUM MODULE**

- Create a digital compendium of information that can be used on mobile devices, replacing the need to keep printing your in-room compendiums
- Send as a link to your guests or use on in-house provided devices.
- The content within the compendium can contain information about a selected accommodation option, general information about your property, information about the area, links to any websites (e.g. local restaurants) as well as advertising spots

### **FORM BUILDER MODULE**

- If you need a form to capture information from your visitors then this module allows you to create the form you need.
- Create text fields, checkbox fields, selection items and more

### **LIVE INSTAGRAM FEED**

- Include a preformatted Instagram feed in the footer section of your website
- Allows you to link your Instagram account and display your photos in a carousel across the bottom of the page

### **WEATHER FORECAST MODULE**

- This forecast is displayed just below the main content region on the home page of your website.
- Allows you to show a standard 4-day weather forecast on your website

### **EXTENDED PARTNER LOGOS**

- If three logos in the footer are insufficient, additional logos can be added by extending the partner logo feature

### **CONTENT LOADING AND BASIC CMS TRAINING**

- Have our team load your base content (5 pages) to ensure your website looks fantastic from day one
- Includes 1hr CMS training on how to get the best from your new website

### **PAYMENT REQUEST MODULE**

- Create a payment link that is sent to a payer via email only. This will direct them to a pre-configured payments page on the website.
- This is an excellent option if you receive emails and calls from customers requesting a booking.
- (This requires a DPS or Paypal account, for online transactions to be made)



## **DIGITAL MARKETING SERVICES**

### **Initial Search Engine Optimisation Booster**

- Initial website booster and SEO best practice implemented
- Essential for a new site to assist Google ranking
- Includes first month management

## **WEBSITE HOSTING - INCLUDED**

- 250Mb data storage
- 3.0Gb bandwidth allowance
- Mobile Optimisation
- Basic SSL security and hacking protection

## **WEBSITE REGISTRATION – NOT INCLUDED**

This does not include registering your website domain. If this is your first website, you will need to register and purchase a domain ([www.yourbusiness.com](http://www.yourbusiness.com)). We are happy to provide this service at an additional cost.

This does not include annual registration fee for your website domain